



Florida Department of Transportation

RON DESANTIS
GOVERNOR

2198 Edison Avenue
Jacksonville, Florida 32204-2730

JARED W. PERDUE, P.E.
SECRETARY

For Immediate Release

July 20, 2023

Contact: Nathan Pick

(904) 831-3368 | Nathan.Pick@dot.state.fl.us

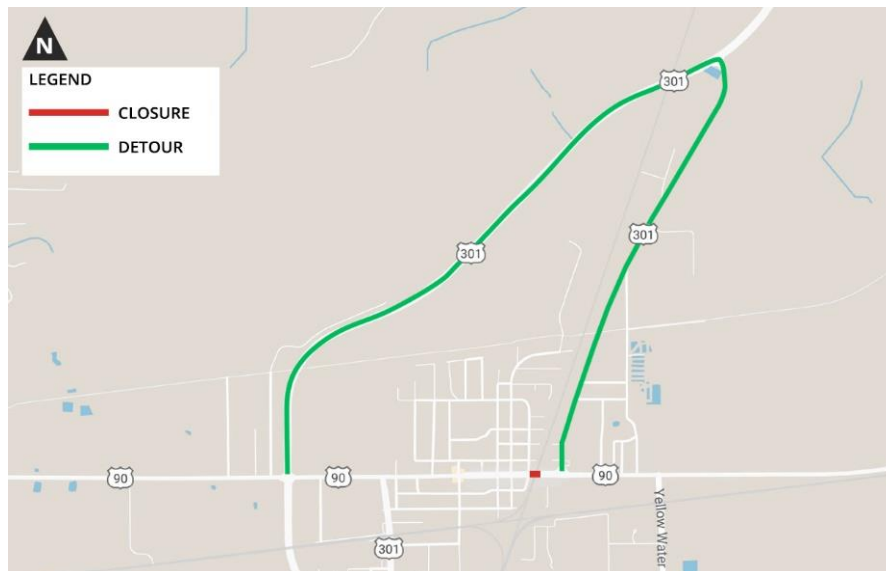
Closure and Detours: U.S. 90 Railroad Crossing Construction in Baldwin Starting July 24

BALDWIN, Fla. – As part of Florida Department of Transportation improvements to the U.S. 90 railroad crossing in the Town of Baldwin, the roadway will be closed in the immediate area of the crossing and detoured starting July 24. This closure is expected to be in place for 25 days, weather and unforeseen circumstances permitting.

Detours that will be in place during the closure are as follows:

From the east side of the railroad crossing: Westbound U.S. 90 (W. Beaver Street) traffic will travel north on U.S. 301, turn left on the U.S. 301 Baldwin Bypass (State Road 201) and proceed to U.S. 90 (W. Beaver Street) on the west side of the rail crossing.

From the west side of the railroad crossing: Eastbound U.S. 90 (W. Beaver Street) traffic will travel north on the U.S. 301 Baldwin Bypass (State Road 201), turn right on U.S. 301 and proceed to U.S. 90 (W. Beaver Street) on the east side of the rail crossing.



Improve Safety, Enhance Mobility, Inspire Innovation
NFLRoads.com | [@MyFDOT_NEFL](https://www.instagram.com/MyFDOT_NEFL) | [Facebook.com/MyFDOTNEFL](https://www.facebook.com/MyFDOTNEFL)

The Florida Department of Transportation's mission is to provide a safe transportation system that ensures the mobility of people and goods, enhances economic prosperity, and preserves the quality of the state's environment and communities. The department is committed to building a transportation system that not only fits the current needs of Florida's residents and visitors, but also enhances mobility throughout the state to accommodate its consistent and rapid growth. The unique nature of the Sunshine State and its year-round warm climate provides numerous opportunities to achieve the department's mission through multiple transportation modes including highways/streets, air, rail, sea, spaceports, transit, and the ever-expanding deployment of bicycle & pedestrian facilities.

Stay informed about lane closures and roadwork in your area by following FDOT District 2 at [@MyFDOT_NEFL](https://twitter.com/MyFDOT_NEFL) on Twitter, at [MyFDOTNEFL](https://www.facebook.com/MyFDOTNEFL) on Facebook or by visiting nflroads.com.

###